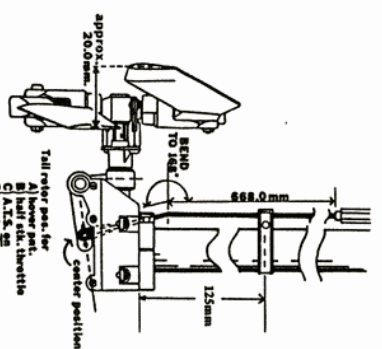
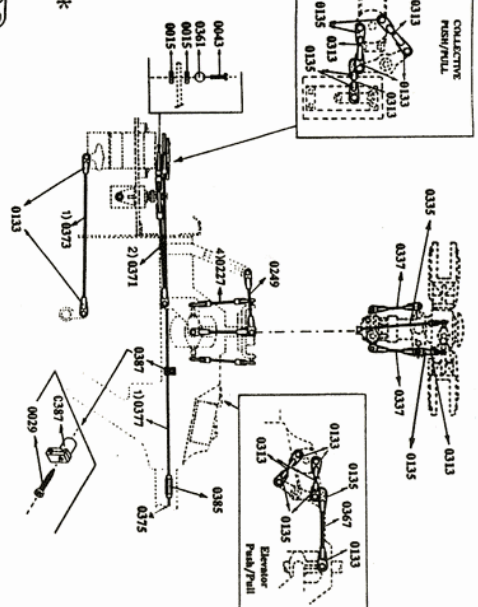
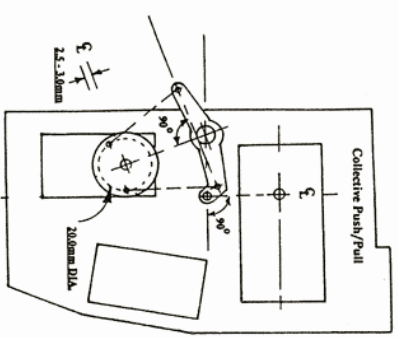
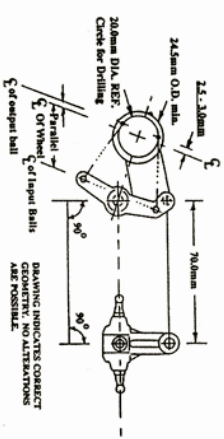


\* Variable with servo choice and position.



Tail rotor per. for  
M hull etc. (hull etc.  
C.A.T.S. etc.  
D. hull etc. (hull etc.  
D. hull etc. (hull etc.)

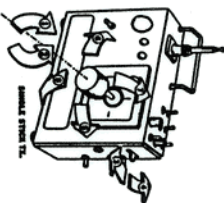
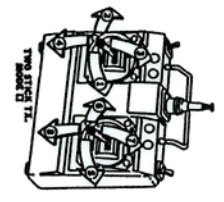
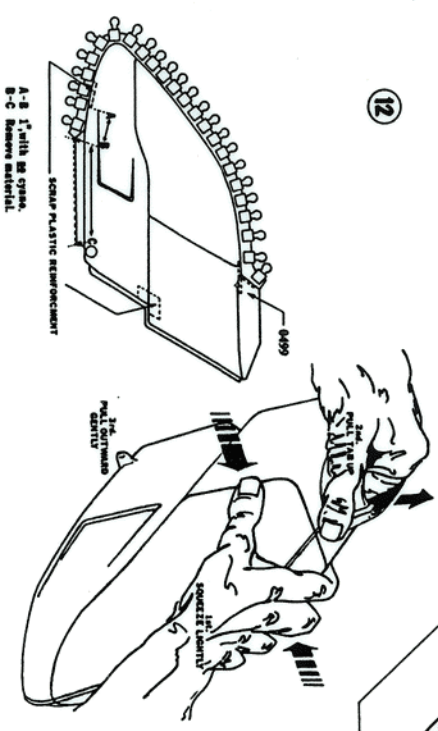


Standard Motor  
**X-CELL**  
CUSTOM

SCHOONARD's  
**X-CELL**  
CUSTOM



**miniature aircraft USA**  
1993 - Copyright by Schoonard's  
3743 Silver Star Road  
Orlando, Florida 32808  
Phone 407-292-4267  
FAX 407-292-4296



Note: Specifications of replacement motor: (Check 57 Type Stock and Single Stock)  
 (1) Diameter - 1.4mm  
 (2) Length - 1.5mm  
 (3) Shaft Diameter - 0.5mm  
 (4) Shaft Length - 1.0mm  
 (5) Motor Weight - 0.1g  
 (6) Motor Voltage - 1.5V  
 (7) Motor Current - 100mA  
 (8) Motor RPM - 1000  
 (9) Motor Torque - 0.01g-cm

14

